



Jones
FEED MILLS LTD.

Linwood - Heidelberg - Wroxeter - Mitchell

Order Desk: 519-698-2082 * Dispatch: 519-698-9928

1-800-265-8736 Fax# 519-698-2719

www.jfm.ca

Jones Beef Producer Meeting

Date: Tuesday August 26/14

Place: Meadowbrook Agri Systems (Marvin Martin)
#7488 Hwy 89 (5 km. East of Mt. Forest)

Time: 6:30 PM (BBQ Dinner Provided)

**Receiving Protocols and Nutrition for
New Arrival Calves with
Dr. Randy Dew – Akey Nutrition**
RSVP to your Rep or 1-800-265-8735



Use Jones "TRANS4M" to TRANSITION



Talk to a member of the Jones Dairy Team to see how TRANS4M can work for you!



Use TRANS4M to:

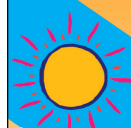
- Increase intakes through the post-fresh period!
- Increase peak milk
- Manage post-fresh metabolic disorders
- Recover post-fresh Body Condition Score losses
- Increase digestibility
- Maintain overall cow health through transition period!

Call Jones Feed Mill at 800-265-8375



Jones Feed Mills 1024 Alfred Street, Linwood, Ontario 1-800-265-8735 www.jfm.ca

Keep Your Cows Cool This Summer with Heat Stress Feed and Management Options from Jones Feed Mills



Talk to your Jones Dairy Sales Consultant about how to best manage heat stress this summer



Jones Feed Mills Ltd.
Linwood - Heidelberg - Wroxeter - Mitchell
Just Think Jones!



Jones Feed Mills 1024 Alfred Street, Linwood, Ontario 1-800-265-8735 www.jfm.ca



Which statement do you think will best describe the beef industry this fall?

- (1) There is a lot of money in the beef business.
- (2) There is a lot of money **involved** in the beef business.

If you answered #1, congratulations! If you answered #2 or are hoping it's #1, talk to your Jones Beef Sales Consultant to ensure you are accurately monitoring your cattle's energy intake to ensure optimum growth and conversion.

The Jones Beef Team!
Together we can make you #1!

The Jones Beef Team - WE KNOW BEEF!

Peter Dumart 519-501-8864 ☛ Brad Cober 226-750-0659

Brian Coghlin 519-291-0291 ☛ Doug Helm 519-379-6028

Joe O'Rourke 519-496-5115 ☛ Order Desk: 1-800-265-8735

